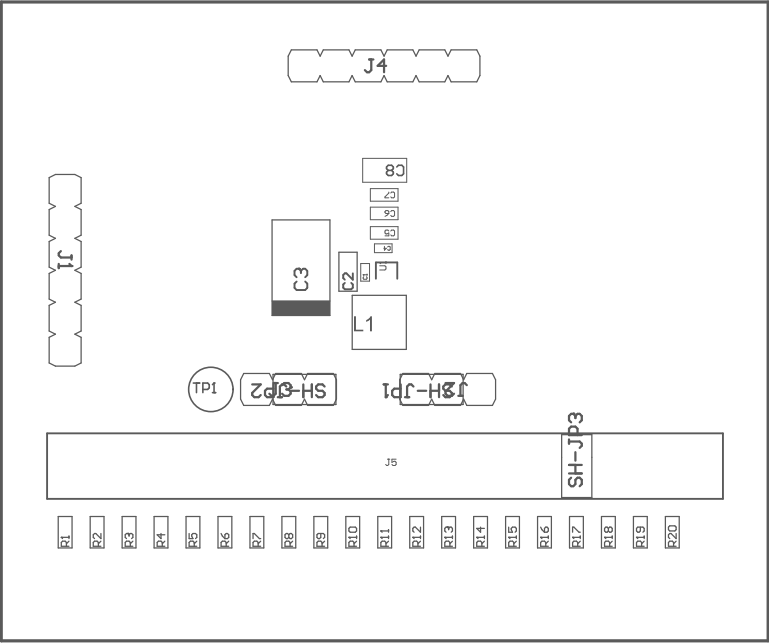


- Z21 ■ These assemblies are ESD sensitive, ESD precautions shall be observed.
- Z22 ■ These assemblies must be clean and free from flux and all contaminants. Use of no clean flux is not acceptable.
- Z23 ■ These assemblies must comply with workmanship standards IPC-A-610 Class 2, unless otherwise specified.
- Z24 ■ Install Shunt Jumper SH-JP1 onto header J2 Pin2,3.
- Z25 ■ Install Shunt Jumper SH-JP2 onto header J3 Pin2,3.
- Z26 ■ Install Shunt Jumper SH-JP3 onto header J5 Pin 9,10



COMPONENTS MARKED 'DNP' SHOULD NOT BE POPULATED.
ASSEMBLY VARIANT: 001

PCB VIEWED FROM TOP SIDE	BOARD #: SR016	REV: E1	SUN REV: Not in version control
	TID #: N/A		
PLOT NAME = Top Assembly Drawing	GENERATED : 10/27/2023 3:20:18 PM		TEXAS INSTRUMENTS



COMPONENTS MARKED 'DNP' SHOULD NOT BE POPULATED.
ASSEMBLY VARIANT: 001

PCB VIEWED FROM BOTTOM SIDE	BOARD #: SR016	REV: E1	SUN REV: Not in version control
	TID #: N/A		
PLOT NAME = Bottom Assembly Drawing	GENERATED : 10/27/2023 3:20:19 PM		TEXAS INSTRUMENTS